

Quick Start Guide

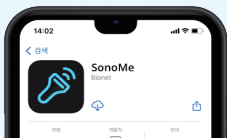
1 Charge the transducer's battery

Use the provided charging cable (wireless or wired). You can check the charging status on the transducer indicator.



2 Download the SonoMe App

Search "SonoMe" in the App Store (Apple devices) or Google Play (Android devices).



3 Turn on your transducer

Press the power button.

If on, you can see the battery icon and the blinking network icon.



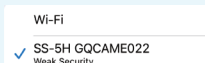
Network icon

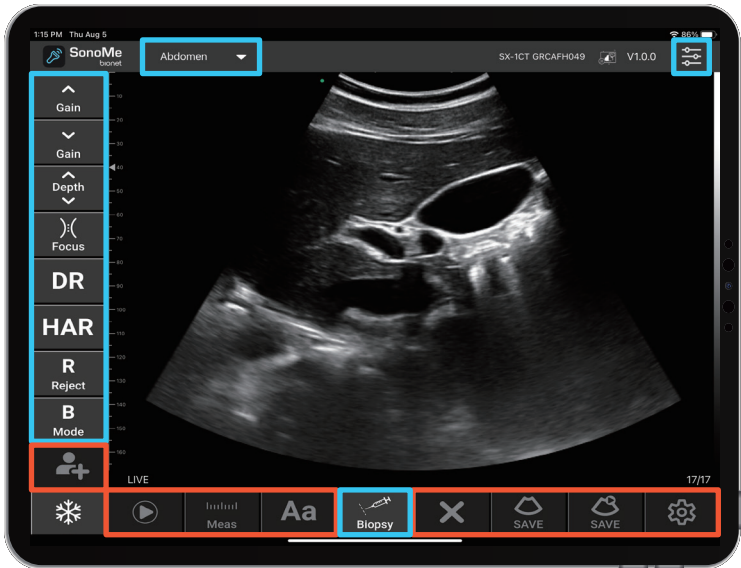
4 Connect your transducer and smart device

Go to Settings on your smart device to set the Wi-Fi connection. Find and select the SSID of the transducer (e.g. SS-xxxxFCA001).

For the password, input the Product ID in lowercase.

The Product ID can be found on the backside of the transducer. After the transducer has been connected, launch the SonoMe App. When connected, the network icon should appear solid without blinking.





Before Freeze After Freeze

* Button Guide

| | | | | | |
|--|-------------|---|---|--|-------------------------------|
| | Abdomen | ▼ | Preset by application | | TGC |
| | Gain | | Change image gain | | Select image mode |
| | Depth | | Adjust depth | | Input patient information |
| | Focus | | Adjust focus | | Freeze image |
| | DR | | Adjust dynamic range | | Replay after freeze |
| | HAR | | Change working frequency | | Measurement |
| | R Reject | | Eliminate noise | | Annotation |
| | Biopsy | | Biopsy guide | | Clear measurement /annotation |
| | SAVE | | Save a single image | | Save image video |
| | Settings | | (DICOM Settings, Show Information, Cine Loop, WiFi Channel) | | |

For more details, please visit our website, www.sonome.com