

D³-VET

Portable Color Doppler Ultrasonic System for Animals
Smart, Ease, Caring



VINNO Technology (Suzhou) Co., Ltd.

5F, A Building, No.27 Xinfu Rd, Suzhou Industrial Park, 215123, China

Tel: +86 512 62873806

Fax: +86 512 62873801

Email: vinno@vinno.com

Website: www.vinno.com

VINNO reserves the rights to revise the technical specification if needed.





D³-VET

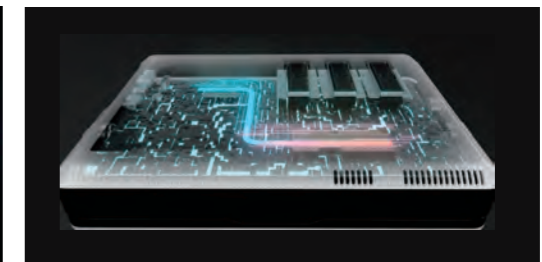
VINNO D3-VET has created a smart and compact solution with its creative concept and highly integrated processing, which provides outstanding images and professional analysis for multiple veterinary applications..

Innovative Platform

Built with the world's first RF platform, it brings together conventional beam integration and front-end data processing, the streamlined workflow makes all operations convenient and is suitable for various veterinary scenarios.



▲ Integrated processing core



▲ Innovative structure and design



Comprehensive Applications

- » Multiple probes for various animals
- » Dedicated veterinary measurement packages
- » Automatic backlight adjustment for use both indoors and outdoors
- » Compact design and lightweight trolley to fit in small spaces

- Supports 3 probe ports
- Battery lasting for about 1.5 hours
- Supports CWD, ECG



15.6 inch LCD display

Wide-viewing angles with adjustable range

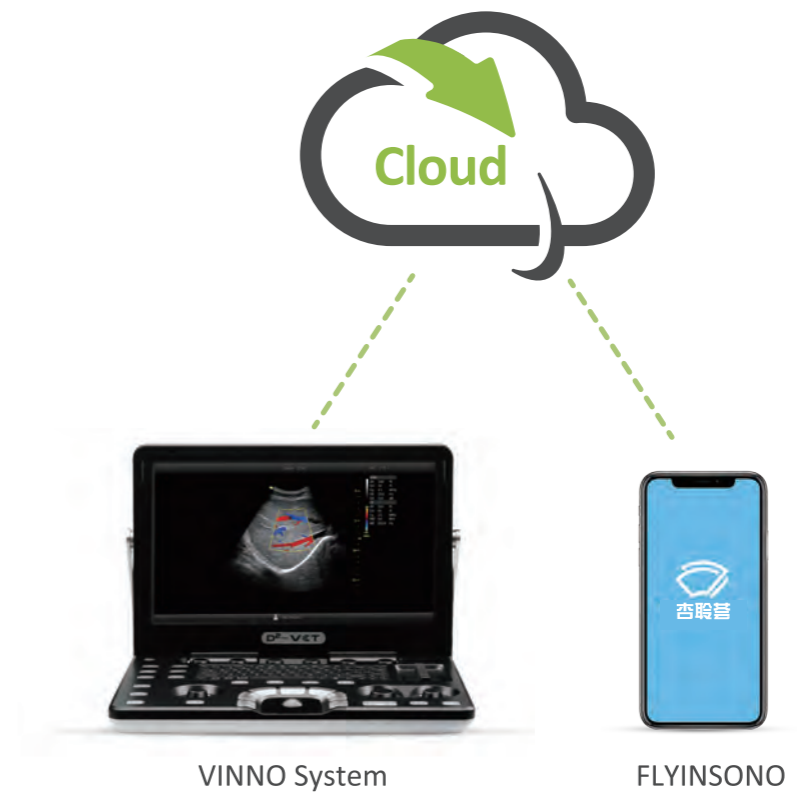
Detachable probe holder





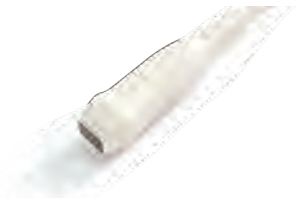
FLYINSONO Remote Solution

VINNO enables remote consultations, remote teaching, and remote maintenance on a cloud platform, provides users with an efficient way to obtain more services.



- 1. Real-time consultation
- 2. Time-sharing consultation
- 3. Remote training
- 4. Remote maintenance

Probe information



A1-4P

Phased Array
Application: cardiac



A3-10P

Phased Array
Application: Abdomen,
Cardiac



A4-9M

Broadband Micro Convex Array
Application: Abdomen, Cardiac



A2-5C

Convex Array
Applications: Abdomen,
OB/GYN, Urology



A4-12L

Broadband Linear Array
Application: Abdomen,
Tendon, Small Parts, Eye



A4-12LV

Broadband Linear Array
Application: Repro



Superior imaging performance

- » Reduces speckles and artifacts in homogeneous tissue and enhances edge sharper.
- » VFusion effectively increases the signal-to-noise ratio of tissues, improves the overall imaging performance.

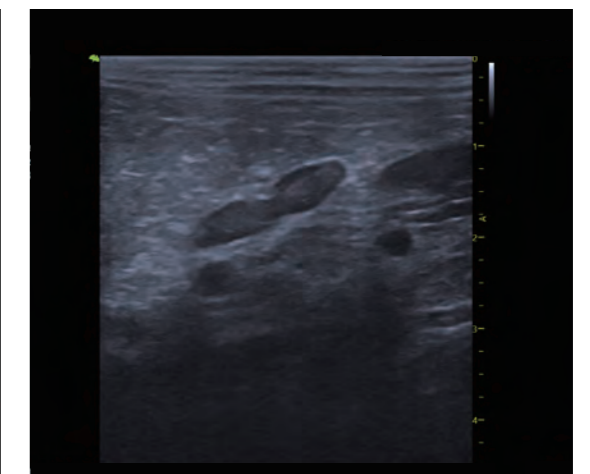
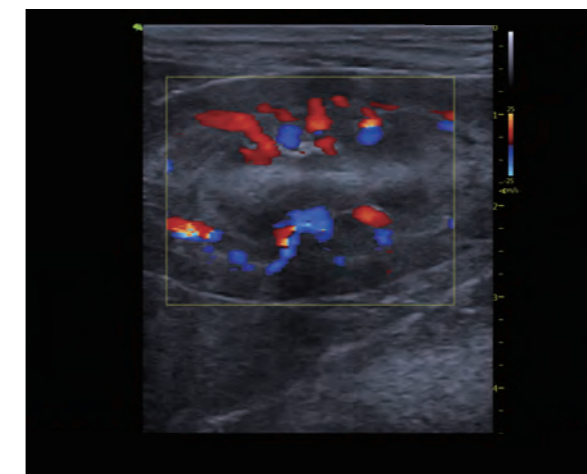
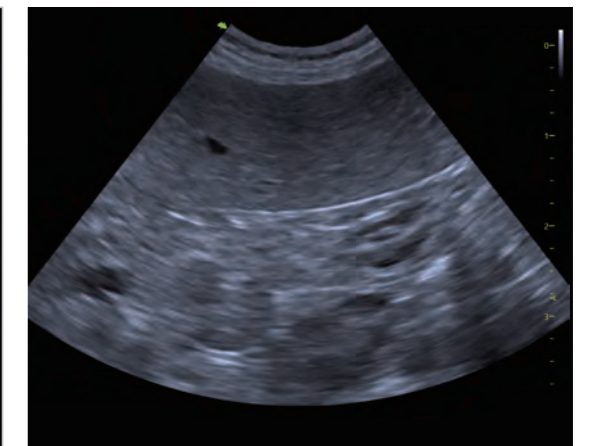
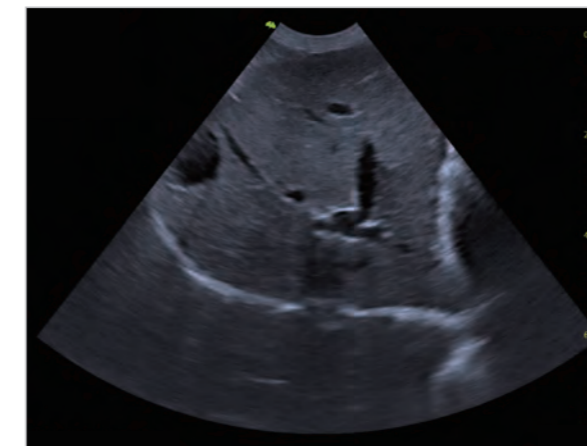


Image Gallery

